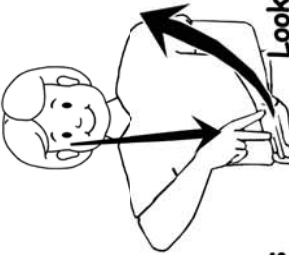




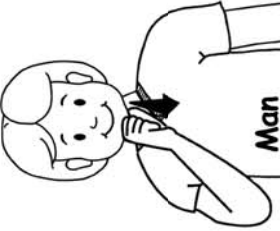
Santa/Father Christmas



Looking at his list



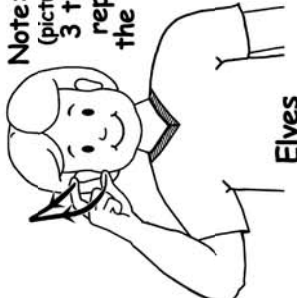
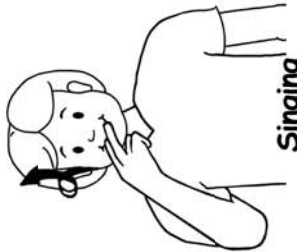
Snow



Man



Singing

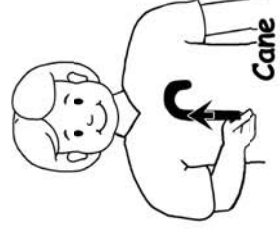


Elves

Note: Sign Elf (pictured left) 3 times to represent the 3 elves.



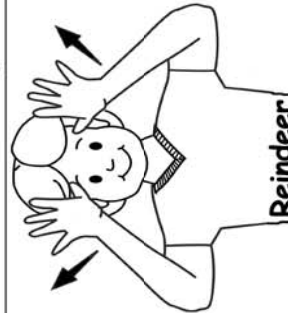
Lolly/Candy



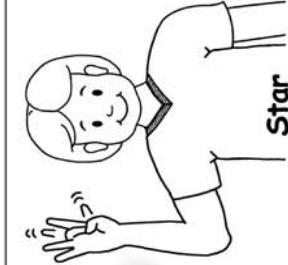
Cane



Reindeer!



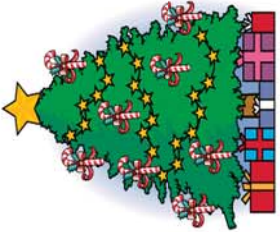
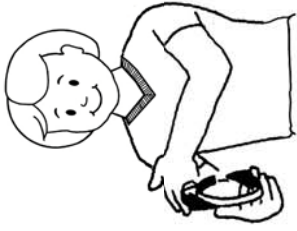
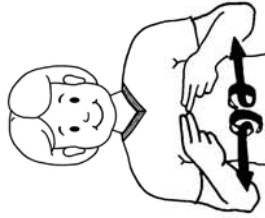
Star



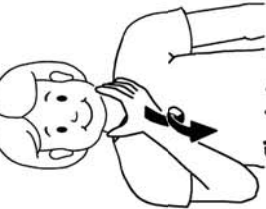
Presents

(alternatively)

Parcels

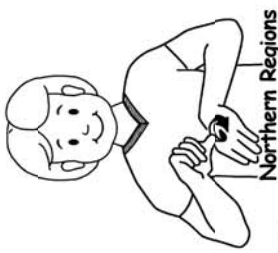


Christmas



Southern Regions

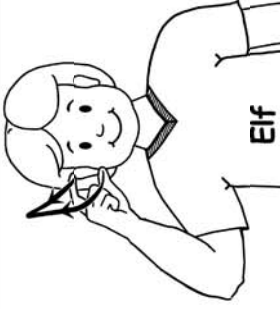
Cookie/Biscuits



Northern Regions



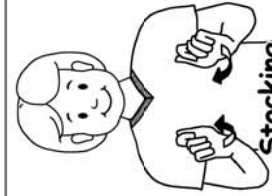
Elf



Note: Sign Elf (pictured left) 2 times to represent the 2 elves.



Christmas



Stocking